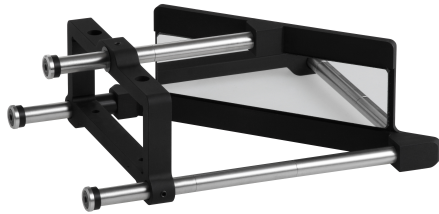


# CMMR4K060-L | DATASHEET

45° first surface mirror for 83.0 x 38.5 mm clamping diameter optics, right angle lateral bend



## SPECIFICATIONS

### Optical specifications

Coating	Aluminium reflective coating, R>90%, bandwidth 430-670 nm	
Deviation angle	(°)	90

### Mechanical specifications

Clamping size	(mm)	83.0 x 38.5
Clamping system	mounting screws	
Working distance difference <sup>1</sup>	(mm)	94.6
Length	(mm)	208.5
Width	(mm)	118.4
Height	(mm)	72.0
Mass	(g)	518

Protective windows<sup>2</sup> N.A.

<sup>1</sup> Value to be subtracted from the objective or illuminator working distance when the CMBS is used

<sup>2</sup> To be ordered separately

## KEY ADVANTAGES

Reflect light at 90°.

Ideal for **limited space**.

**Easy and secure clamping system**.

**Compatible** with telecentric lenses and illuminators.

Optional **protective windows** available.

**CMMR series** is the Opto Engineering® answer to tight space integration issues, opening new installation options for your application.

## COMPATIBILITY

This products is compatible with the following lenses:

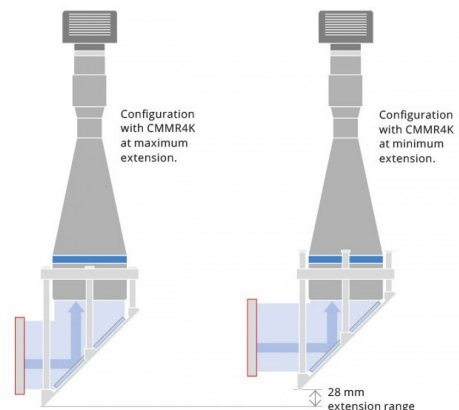
- TC4K060-x

This products is compatible with the following illuminators:

- LTCL4K060-x

## CMMR SETUP

CMMR4K-L bends the light rays laterally.  
LEFT BEND



## COMPATIBLE PRODUCTS

Full list of compatible products available [here](#).



A wide selection of innovative machine vision components.